

# Eco-friendly Solutions of Hotel Cosmetics & Dispensers



## 1, WET+DRY

Deep clean the wall with a wet cloth and use a dry cloth to thoroughly dry it.

## 2, 30 S

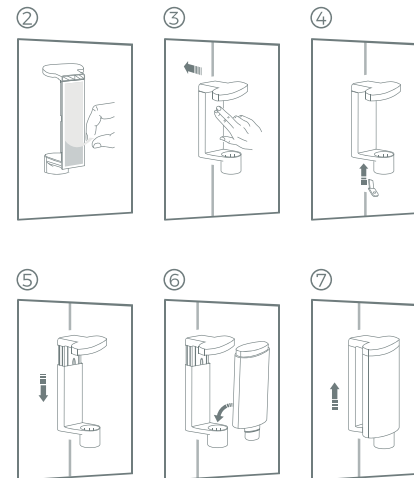
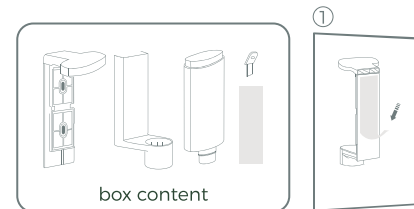
Stick the bracket onto the wall and firmly press the entire bracket for 30 seconds.

## 3, 1 DAY

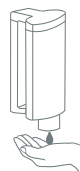
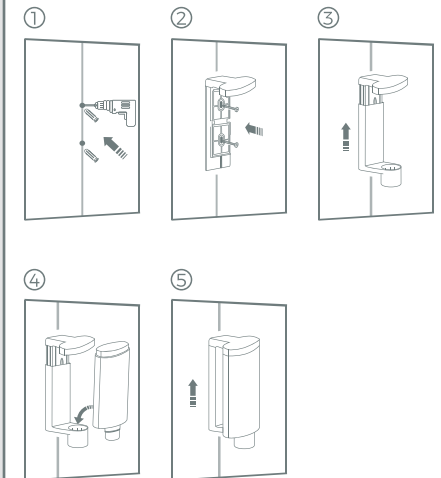
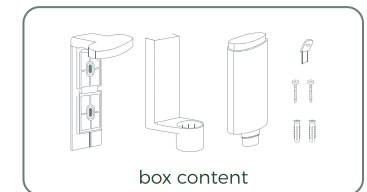
Avoid any contact or loading onto the bracket for the next 24 hours.

- Do not install the bracket on ceramic tile joints.
- Suitable environmental temperature for installation: 15-38°C (59-100.4°F).
- The adhesives are best-suited for smooth surfaces, e.g., ceramic tiles, glass/metal/plastic panels.
- Screw the bracket onto uneven or matte surfaces instead of using the adhesives.
- Improper installation may cause the bracket to take damage from fall.
- This instruction is only applicable for installation by adhesives.

### Adhesive type



### Screw type



## Wenesy Squeezable Dispenser Pro

Easy to install